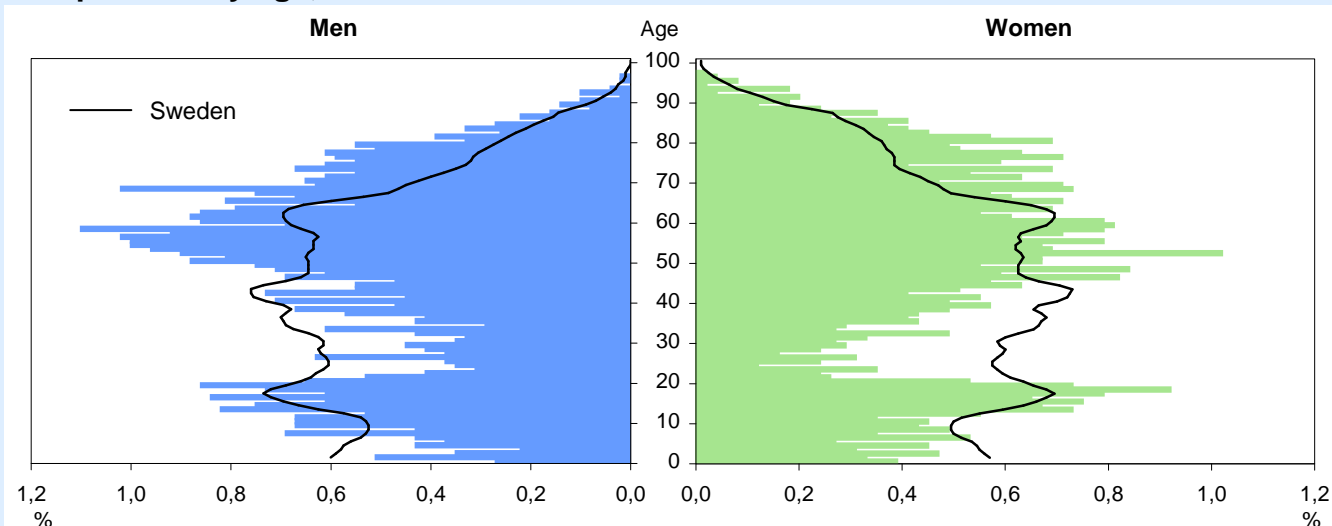


# Övertorneå 2008 Municipal facts

Land area: 2 381 sq km

Inhabitants/sq km: 2,14

## Population by age, 2007



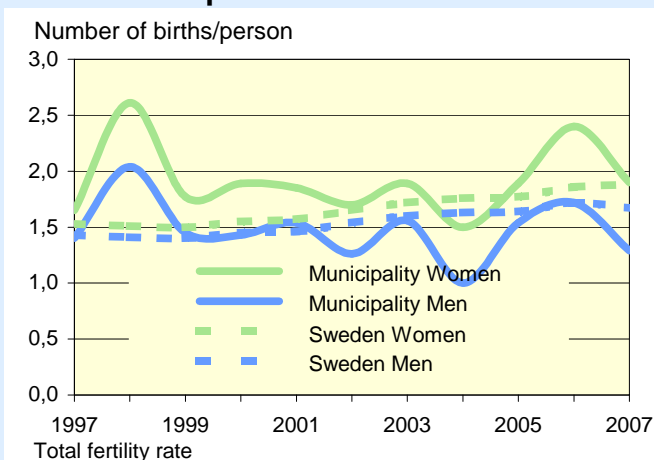
## Population by age, 2007

Age	Percentage distribution Municipality			Sweden		
	M	W	Tot	M	W	Tot
0-6	5	6	5	8	8	8
7-15	11	10	11	11	10	10
16-19	6	6	6	6	5	6
20-24	4	3	4	6	6	6
25-44	19	16	18	27	26	27
45-64	31	30	31	26	26	26
65-79	19	19	19	12	13	12
80-	5	10	7	4	7	5
Total, %	100	100	100	100	100	100
Total (thou)	3	2	5	4 564	4 619	9 183
Antal	2 667	2 425				

## Population trends, 1997-2007

Year (31 Dec.)	Population Number	Excess of births over deaths	Net migration	
			M	W
1997	5 962	-32	-6	1
1998	5 868	-38	-26	-24
1999	5 746	-57	-29	-34
2000	5 602	-45	-37	-61
2001	5 484	-38	-35	-43
2002	5 391	-49	-19	-23
2003	5 331	-50	2	-11
2004	5 244	-58	-8	-20
2005	5 229	-36	17	2
2006	5 168	-52	-1	-9
2007	5 092	-65	3	-15

## Live births per woman/man



## Migrations, 2007

	Men	Women
<b>In-migration</b>	150	138
within the county	61	61
from another county	45	33
from another country	44	44
Of which, ages 18-24	26	22
<b>Out-migration</b>	147	153
within the county	60	69
to another county	57	67
to another country	30	17
Of which, ages 18-24	41	42
<b>Net migration</b>	3	-15

## Births and deaths, 2007

Number	Men	Women
Births	14	18
Deaths	38	59

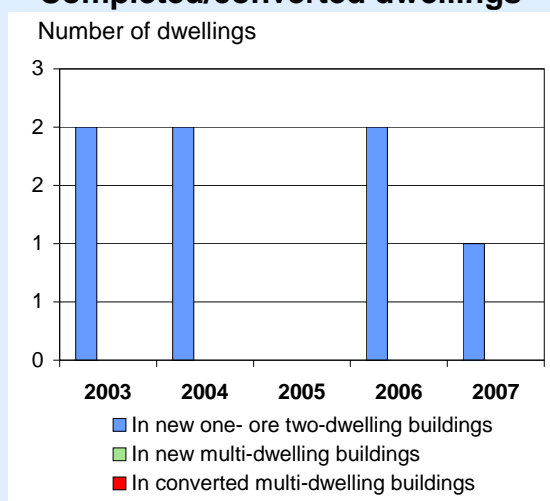
## Foreign born, 2007

Prop. (%) of all inhabitants	M	W	Tot
Municipality	15	32	23
Sweden	13	14	13

### Seats in the Municipal Council

Political party	Number of seats after the election			
	2002		2006	
	Men	Women	Men	Women
Moderate Party	2	0	2	0
Centre Party	4	2	5	3
Liberal Party	0	0	0	0
Christian Democratic Party	0	2	0	1
Green Party	0	0	0	0
Social Democratic Party	8	5	7	7
Left Party	3	1	2	1
Other parties	6	2	5	2
All parties	23	12	21	14

### Completed/converted dwellings



### Population by level of education, 31 December 2007

Level of education	Percentage distribution								
	Municipality			County			Sweden		
	M	W	Tot	M	W	Tot	M	W	Tot
Compulsory schooling	12	10	11	13	11	12	17	13	15
Upper secondary	67	60	64	60	53	56	50	47	48
Post-secondary education	17	27	22	26	36	30	31	39	35
Unknown	3	3	3	1	1	1	2	1	2
Total, %	100	100	100	100	100	100	100	100	100
Total (1 000)	1	1	3	75	69	145	2 739	2 657	5 396

Refers to age group 20–64

### Employed by age group, 2006

	Prop. (%) of all within ages		
	Men	Women	Total
<b>Municipality</b>			
20–24	58	62	60
25–44	75	76	76
45–64	70	74	72
20–64	71	74	72
<b>County</b>			
20–24	60	59	60
25–44	83	79	81
45–64	76	75	75
20–64	77	75	76
<b>Sweden</b>			
20–24	61	57	59
25–44	83	78	81
45–64	78	75	77
20–64	79	75	77

Refers to the night population

#### Night population:

residing in the municipality, regardless of workplace

#### Day population (jobs):

working in the municipality, regardless of residence

### Employment by sector, 2006

	Night population		Day population	
	Men	Women	Men	Women
<b>Municipality</b>	1 084	945	922	874
Business sector	814	342	683	322
Public sector	270	603	239	552
<b>County (1 000)</b>	61	54	60	54
Business sector	47	22	47	21
Public sector	14	32	14	32
<b>Sweden (1 000)</b>	2 235	2 056	2 228	2 053
Business sector	1 889	1 084	1 882	1 082
Public sector	347	971	346	971

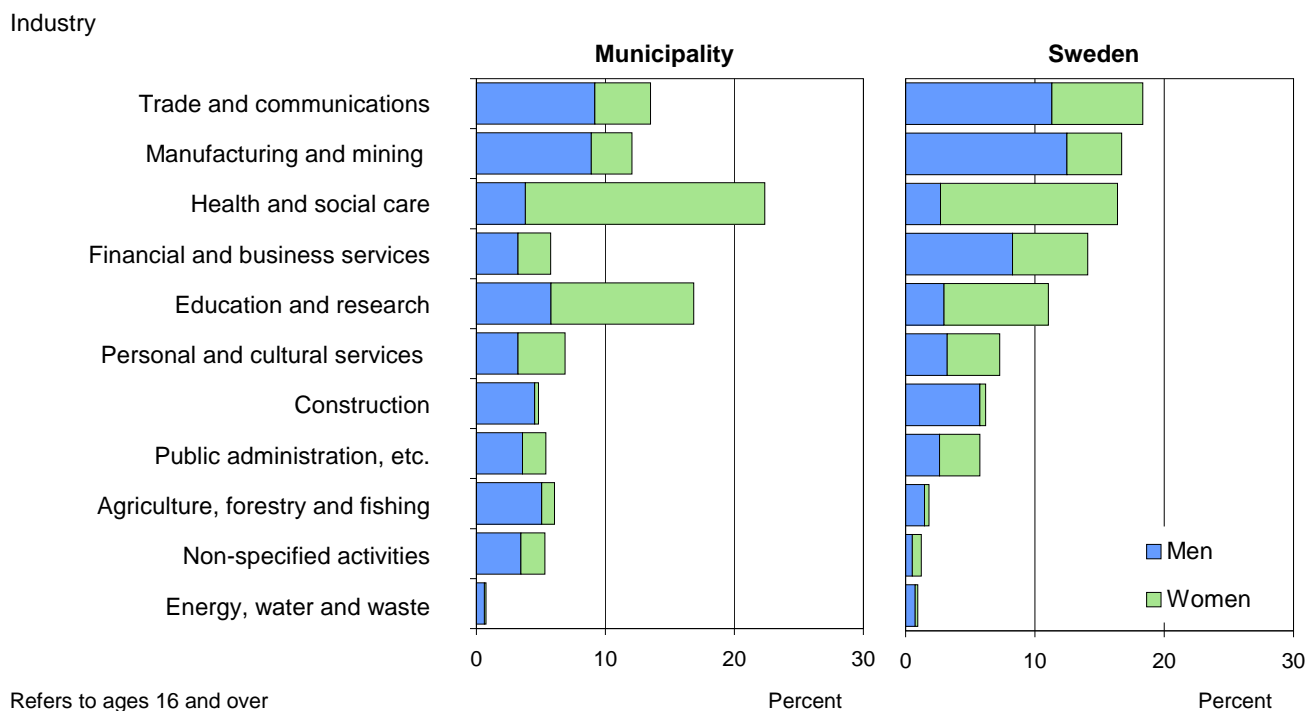
Number of persons ages 16 and over

### Commuting, 2006

	Men	Women
<b>Commuting in</b>	100	48
within the county	81	44
from another county	19	4
<b>Commuting out</b>	262	119
within the county	224	100
to another county	38	19
<b>Net commuting</b>	-162	-71

Number of persons ages 16 and over

## Employment by industry, 2006



## Self-employed, 2006

	Men		Women		Self-employed
	Self-empl. in lim.comp.	Self-employed	Self-empl. in lim.comp.	Self-employed	
1	5	104	2	38	38
2-4	32	17	4	3	3
5-9	17	0	1	0	0
10-	12	0	2	0	0
<b>Total</b>	<b>66</b>	<b>121</b>	<b>9</b>	<b>41</b>	<b>41</b>

Number of persons ages 16 and over

Refers to the day population

## Sickness/activity compensation, 2007

	Prop. (%) of all within ages		
	Men	Women	Total
<b>Municipality</b>			
55-59	21	28	24
60-64	34	41	37
20-64	12	16	14
<b>Sweden</b>			
55-59	15	24	20
60-64	23	33	28
20-64	8	12	10

Replace benefits for disability pension and sickness

## Job seekers

	Proportion (%) of all within age group								
	Municipality			County			Sweden		
	M	W	Tot	M	W	Tot	M	W	Tot
<b>March, 2007</b>									
Ages 20-64	13	9	11	8	6	7	5	4	5
Unemployed	8	5	7	5	4	5	4	3	3
Labour market progr.	5	4	4	2	2	2	1	1	1
Of which, ages 20-24	12	21	15	13	10	12	8	6	7
Number, ages 20-64	197	106	303	5 837	4 267	10 104	130 216	111 742	241 958
<b>March, 2008</b>									
Ages 20-64	11	6	8	6	5	6	4	4	4
Unemployed	6	3	5	4	3	4	3	2	3
Labour market progr.	4	2	4	2	2	2	1	1	1
Of which, ages 20-24	10	8	9	11	8	9	6	5	6
Number, ages 20-64	153	67	220	4 700	3 355	8 055	109 548	96 220	205 768

**Employment and employed, 2006 – Total**

Industry	Day population				Night population			
	Municipality	County	Sweden	Municipality	County	Sweden		
	Number	%	%	%	Number	%	%	%
Agriculture, forestry and fishing	109	6	2	2	130	6	2	2
Manufacturing and mining	217	12	15	17	246	12	15	17
Energy, water and waste	14	1	1	1	15	1	1	1
Construction	87	5	8	6	130	6	8	6
Trade and communications	243	14	15	18	294	14	16	19
Financial and business services	104	6	11	14	120	6	11	14
Education and research	303	17	12	11	295	15	12	11
Health and social care	402	22	19	16	455	22	19	16
Personal and cultural services	124	7	7	7	131	6	7	7
Public administration, etc.	97	5	8	6	118	6	8	6
Non-specified activities	96	5	1	1	95	5	1	1
<b>Total</b>	<b>1 796</b>	<b>100</b>	<b>100</b>	<b>100</b>	<b>2 029</b>	<b>100</b>	<b>100</b>	<b>100</b>
Refers to ages 16 and over								

**Employment and employed, 2006 – Men**

Industry	Day population				Night population			
	Municipality	County	Sweden	Municipality	County	Sweden		
	Number	%	%	%	Number	%	%	%
Agriculture, forestry and fishing	91	10	4	3	113	10	4	3
Manufacturing and mining	160	17	24	24	190	18	24	24
Energy, water and waste	11	1	2	1	11	1	2	1
Construction	81	9	14	11	124	11	13	11
Trade and communications	165	18	18	22	204	19	19	22
Financial and business services	58	6	12	16	69	6	12	16
Education and research	104	11	6	6	98	9	6	6
Health and social care	68	7	6	5	81	7	6	5
Personal and cultural services	58	6	5	6	60	6	5	6
Public administration, etc.	64	7	9	5	72	7	9	5
Non-specified activities	62	7	1	1	62	6	1	1
<b>Total</b>	<b>922</b>	<b>100</b>	<b>100</b>	<b>100</b>	<b>1 084</b>	<b>100</b>	<b>100</b>	<b>100</b>
Refers to ages 16 and over								

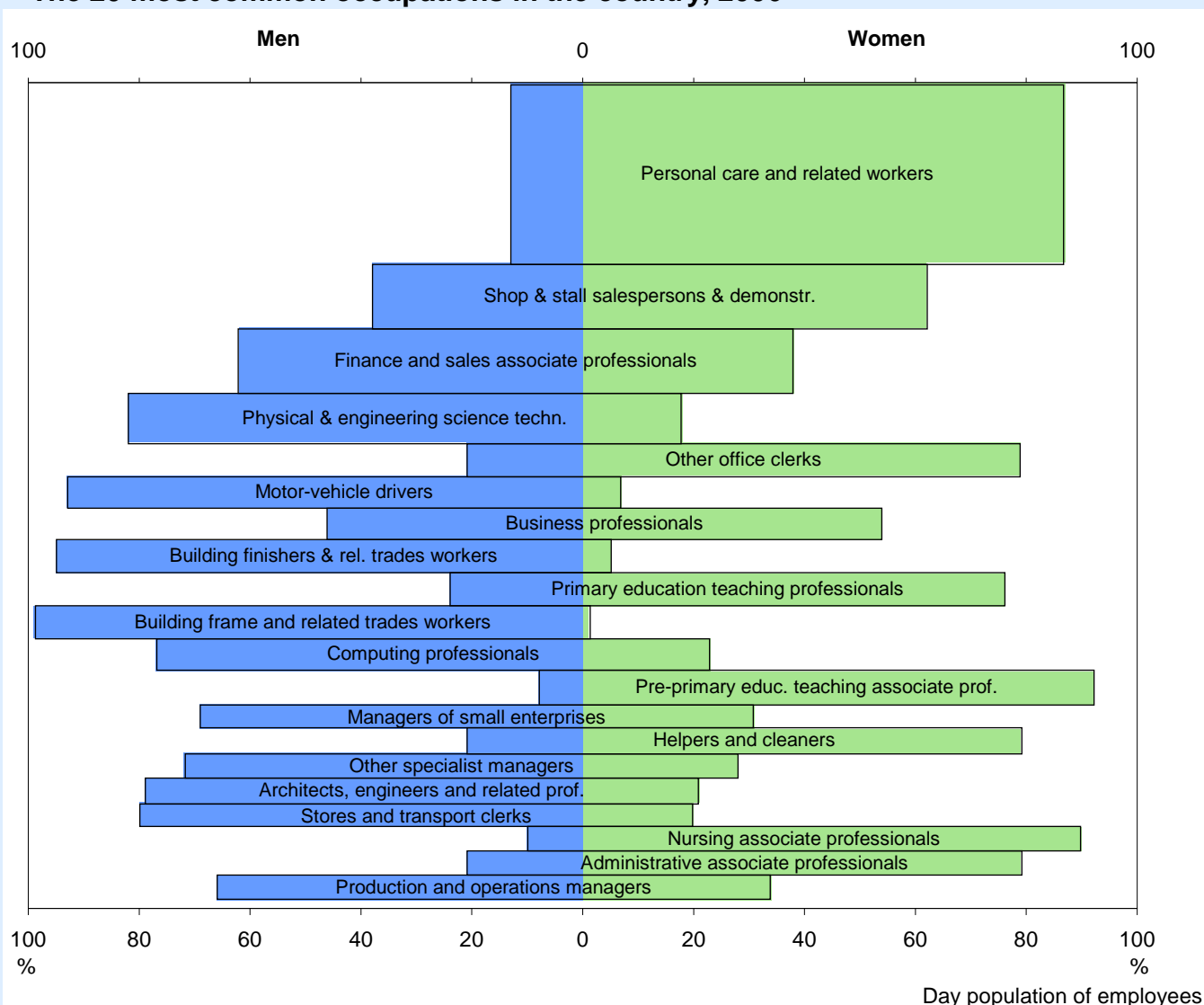
**Employment and employed, 2006 – Women**

Industry	Day population				Night population			
	Municipality	County	Sweden	Municipality	County	Sweden		
	Number	%	%	%	Number	%	%	%
Agriculture, forestry and fishing	18	2	1	1	17	2	1	1
Manufacturing and mining	57	7	6	9	56	6	6	9
Energy, water and waste	3	0	0	0	4	0	0	0
Construction	6	1	1	1	6	1	1	1
Trade and communications	78	9	12	15	90	10	12	15
Financial and business services	46	5	10	12	51	5	10	12
Education and research	199	23	19	17	197	21	19	17
Health and social care	334	38	33	29	374	40	33	29
Personal and cultural services	66	8	9	9	71	8	9	9
Public administration, etc.	33	4	7	7	46	5	7	7
Non-specified activities	34	4	1	1	33	3	1	1
<b>Total</b>	<b>874</b>	<b>100</b>	<b>100</b>	<b>100</b>	<b>945</b>	<b>100</b>	<b>100</b>	<b>100</b>
Refers to ages 16 and over								

The 20 most common occupations in the municipality, 2006

Day population of employees	Number		Perc.distr.			Sex distr. (%)	
	Men	Women	M	W	Tot	M	W
Personal care and related workers	58	306	7	37	23	16	84
Motor-vehicle drivers	91	1	12	0	6	99	1
Primary education teaching professionals	24	45	3	5	4	35	65
Building finishers & rel. trades workers	65	4	8	0	4	94	6
Shop & stall salespersons & demonstr.	23	45	3	5	4	34	66
Other teaching professionals	31	11	4	1	3	74	26
Helpers and cleaners	1	40	0	5	3	2	98
Pre-primary educ. teaching associate prof.	3	37	0	4	2	8	93
Other sales & serv. elementary occup.	11	29	1	4	2	28	73
Building frame and related trades workers	39	0	5	0	2	100	0
Managers of small enterprises	33	4	4	0	2	89	11
Other office clerks	7	30	1	4	2	19	81
Assemblers	28	8	4	1	2	78	22
Sec. education teaching professionals	16	19	2	2	2	46	54
Helpers in restaurants	3	28	0	3	2	10	90
Production and operations managers	15	13	2	2	2	54	46
Public service administrative professionals	13	15	2	2	2	46	54
Agricultural & other mobile-plant operators	25	0	3	0	2	100	0
Nursing associate professionals	2	21	0	3	1	9	91
Business professionals	11	9	1	1	1	55	45
Total 20 occupations	499	665	63	81	72	43	57
All occupations	789	825	100	100	100	49	51

The 20 most common occupations in the country, 2006



### Child care, 2007

Enrollment	Municipality		Sweden
	Number	%	%
Pre-school, 1-5	156	82	80
Leisure time centre, 6-12	137	37	48
Family day care unit, 1-5	2	1	5
6-12	1	0	0
Pre-school class, age 6	50	104	96
Proportion (%) of all within age group			

### Elder care, 2006

	Prop. (%) of all within group			
	Municipality		Sweden	
	M	W	M	W
Home-help services	23	26	16	24
Special housing	13	24	12	19
Transport service	17	33	29	45
Refers to ages 80 and over				

### Total income, 2006

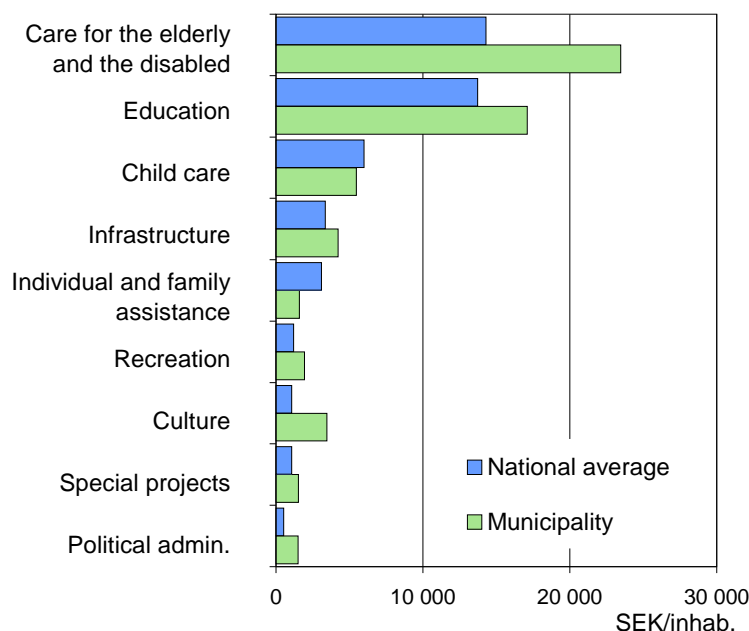
	SEK thousand		
	Men	Women	Total
<b>Average income</b>			
Municipality	215	198	207
County	260	205	234
Sweden	277	206	242
<b>Median income</b>			
Municipality	216	204	210
County	258	208	230
Sweden	261	205	230

Income from employ. and business, age gr. 20-64

### Social assistance, 2006

Type of household	Recipient households		Sweden
	Municipality	%	
	Number	%	%
<b>Cohabiting</b>			
without children	10	11	6
with children	8	9	12
<b>Single men</b>			
without children	42	48	40
with children	5	6	3
<b>Single women</b>			
without children	16	18	24
with children	6	7	15
<b>Total</b>	<b>87</b>	<b>100</b>	<b>100</b>

### Expenditures SEK, per inhabitant, 2006



### Local taxes, 2008

<b>Municipality</b>	
Total local tax rate	30,95
of wich to municipality	21,53
Tax base, SEK/inhab.	125 635
Tax base, index	80

<b>County average</b>	
Total local tax rate	31,69
of wich to municipality	22,27
Tax base, SEK/inhab.	150 346
Tax base, index	95

<b>National average</b>	
Total local tax rate	31,44
of wich to municipality	20,71
Tax base, SEK/inhab.	157 764
Tax base, index	100

Index, Sweden = 100